

Upwood & Great Raveley 1850–1950

A hundred years of village life

Compiled by
Members of the Upwood & Raveley Local History Group

Edited by
Liz Carter & Deana Hudson

1998

First published in 1998 by the Upwood & Raveley Local History Group
The Old Post Office
71-73 High Street
Upwood
Huntingdon
Cambs
PE17 1QE

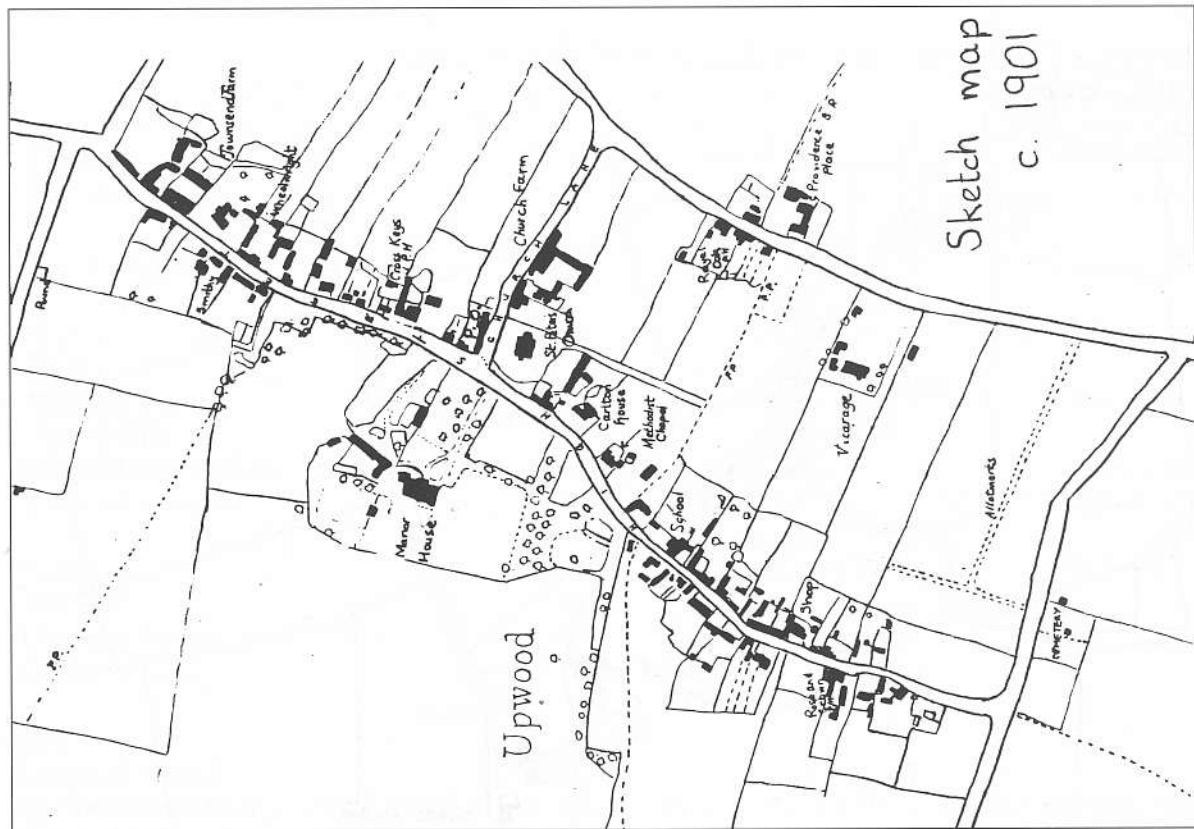
© Upwood & Raveley Local History Group

All Rights Reserved

Typeset in Palatino. Made and printed in Great Britain by The Local History Press, 3 Devonshire Promenade,
Lenton, Nottingham NG7 2DS.

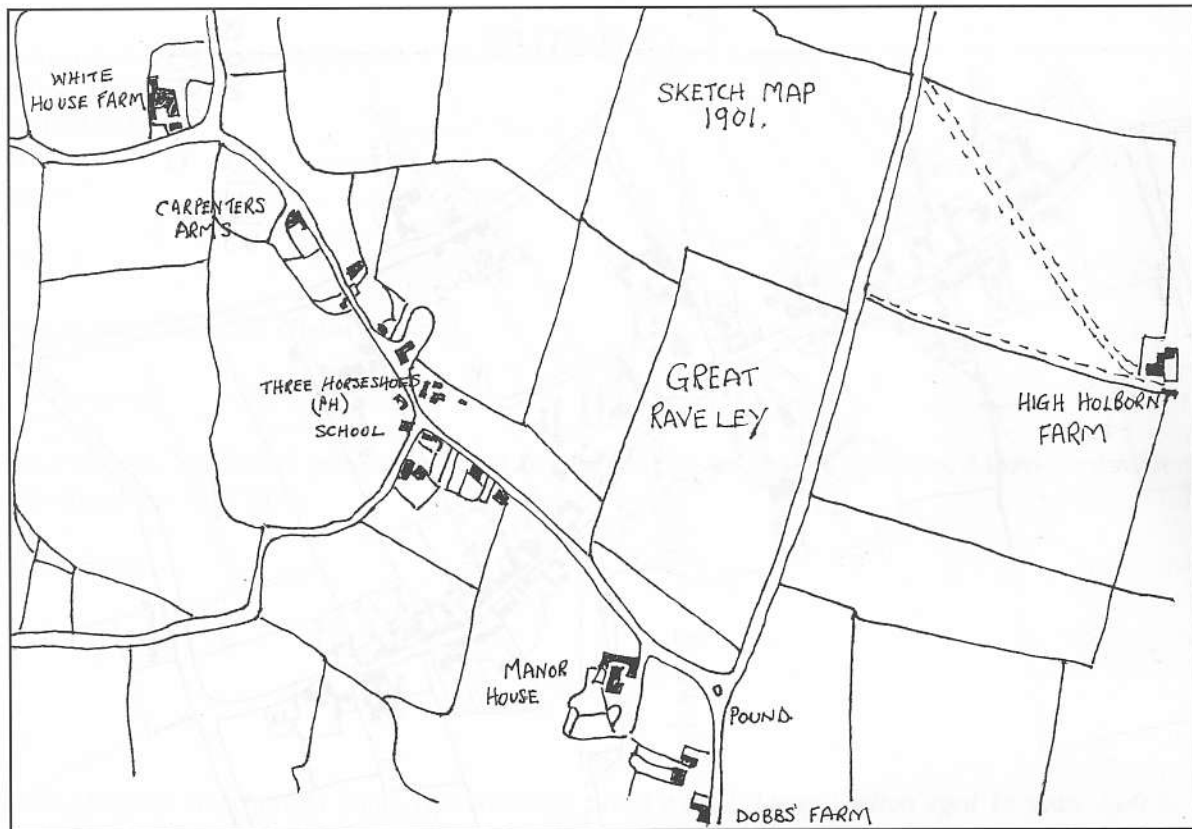
ISBN 0 9534451 0 0

Front cover: Murfin's Wheelwright Shop, Upwood High Street c.1902. James Shelton aged 16 years with the Murfin family at work.



Sketch map
c. 1901

Sketch map of Upwood c.1901



Sketch map of Gt Raveley c.1901

Contents

Sketch Maps			
Upwood	3	Local Trades	
Raveley	4	Public Houses	36
Acknowledgements	6	Grocers & Post Office	40
Introduction	9	Wheelwrights & Carpenters	44
Worship		Blacksmiths	48
Upwood St. Peter	10	Other trades	50
Gt. Raveley Chapels	14	Farming	
Upwood Chapels	16	Upwood Farms	51
Local Features		Gt. Raveley Farms	54
The Mill	18	The War Years	
Upwood House	20	World War I	58
Carlton House	24	World War II	59
Education		RAF Upwood	60
Upwood School	26	Sources	64
Gt. Raveley School	32		

Acknowledgements

Donations

Liz Carter — Genealogical Research.
Terry & Sue Farrell — Upwood House.
Robin & Jan Howe — The Old Barn.
Deana Hudson — Costumier, Upwood.
Bob & Helga Martin — The Cross Keys.
Perkins Farms — Upwood.
Esther Rowley — Illustrator, Upwood.

Photographs

Liz Carter — pp.19, 41.
Mrs. Curtis — p.25.
The Gaunt Family Collection — pp.7, 47.
Daphne Hickman — p.49.
Alan Malt — p.57.
The Perkins Family Collection — pp.17, 45.
Rodney Scarr — p.27.
Doug Shaw — p.29.
Harold Shelton — p.63.
Terry Wells — p.23.
The Woods Family Collection — pp.8, 15, 33, 35, 39, 53,
55, 61.

Sketches

St. Peter's Church, Upwood House and Cross Keys PH
— Esther Rowley
Upwood Map c.1901 — Ruth Peckover
Gt. Raveley c.1901 — Debbie & Trevor Brown

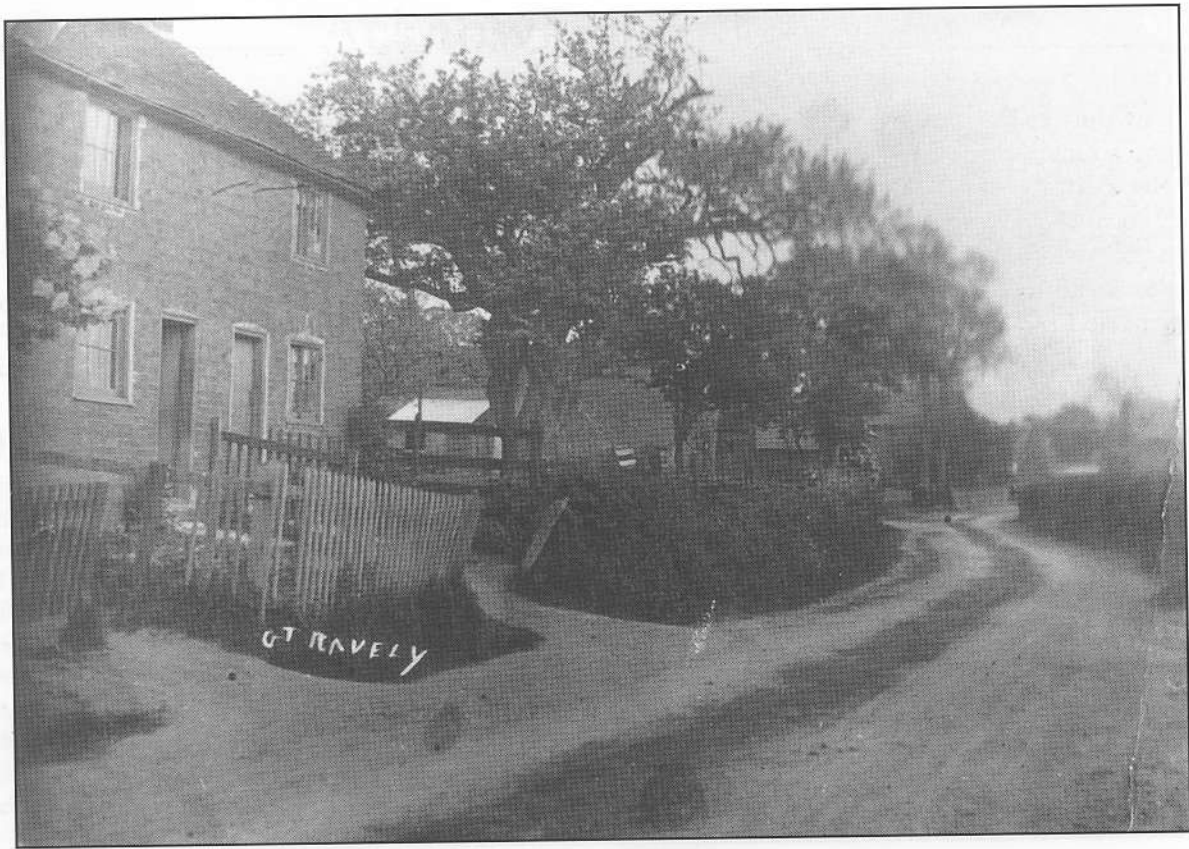


The members of the Upwood & Raveley Local History Group would like to express their thanks to the staff at Huntingdon County Record Office and Huntingdon County Library for their expert advice on research matters. Our thanks are also extended to all the local businesses who have supported us in this venture. However, it is the people of both villages themselves who must be praised for their hard work in collecting the information and photographs, and putting down on paper the many different aspects of village life. Without them this book would not have been possible.

Great care has been taken in the preparation of this book to ensure that names and dates given are as accurate as possible.



South end, Upwood High Street, showing Kennel's cart outside Miss Butler's cottage. (n.d.)



Wood Lane, Gt. Raveley, c.1905

Introduction

The Upwood & Raveley Local History Group grew out of the 'People of Upwood & Raveley' social history course held at the local village school and organised by the University of Cambridge, Board of Continuing Education in 1997. This group of villagers soon realised that, between them, they had access to a wealth of local history which should be preserved for both this and future generations.

This book is a joint effort by members of the Local History Group, using the research skills developed during the social history course and augmented by local knowledge and personal memories of villagers. It spans the period 1850, through Victorian and Edwardian times up to the end of the Second World War. The title 'One Hundred Years of Village Life' is aptly chosen as the stories told reflect life in Upwood and Raveley from different viewpoints.

Upwood and Great Raveley, although two individual villages separated only by a few acres of farmland, were joined together ecclesiastically in medieval times, sharing the parish church dedicated to St. Peter in Upwood. Both villages have a long and interesting history going back to pre-Norman times and both have been primarily concerned with farming and agricultural work.

Historical records for both villages are held locally at the Huntingdon County Record Office and Huntingdon Library. Members of the Group visited both sources for information about the history of the area, some even travelled to the Public Record Office at Kew, Surrey to check facts. Others have collected stories and photographs from local people. Some of the stories led to further research and many family links were discovered during the making of this book. Everyone involved in the making of the book has become more aware of the history of their village, the people who lived there and the importance of recording not just the major events, but also the minutiae of village life before it is forgotten.

This book is not just a collection of period photographs but also a taste of village life as remembered by villagers themselves intermingled with historic facts gleaned from local archives. It is, to quote one member of the group, 'A book for all lovers of village history'.